



THE BRAND NEW IMU GENERATION

IMU Modular Generator Standard & Extended



 This document has been optimized for electronic media

 Smart navigation through technical specifications. Click the green links.



Accredited Calibration

Quality at EMC PARTNER is based on an ISO 9001 management system. This is the foundation for an ISO 17025 accreditation verified by the Swiss Calibration Service (SCS). SCS No. 146 is the accreditation number of EMC PARTNER AG. Locally accredited but recognized worldwide through affiliation with the ILAC organisation



THE CONDUCTED IMMUNITY TEST SYSTEM

MANY CHOICES ONE SOLUTION

Basic and product standards require a mix of conducted immunity EMC tests.

Required test types can include:

- › Electric Fast Transient (EFT)
- › Surge (CWG, Ring wave, Telecom)
- › AC / DC Dips & Interrupts
- › AC / Impulse / Magnetic Field
- › Common Mode
- › Differential Mode

The ideal is a flexible test equipment that combines any or all of these requirements into one single solution.

CUSTOM IS STANDARD

IMU generators are designed with the user in mind. A modular architecture allows configuration of test circuits to meet any requirement. A solution that can easily be extended with more modules when additional tests are needed.



IMU-MGS

- Standard IEC capabilities

Available Modules

- Surge / CWG 4kV / 5 kV
- EFT 4kV / 5kV
- Common Mode 35V / 330V
- AC & DC Interrupts 16A / 32A / 75A
- AC DIPS & Variation 16A
- Differential Mode voltage / current
- ESD 16kV



IMU-MGE

- Extended Capabilities

Available Modules

- Surge / CWG 5 kV / 6kV / 8kV
- Ring Wave 6kV / 8kV
- Telecom 6kV / 8kV
- EFT 5kV / 6kV / 7kV
- Common Mode 35V / 330V
- AC & DC Interrupts 16A / 32A / 75A
- AC DIPS & Variation 16A
- Differential Mode voltage / current
- ESD 16kV

WHY MODULARITY ?

A cost-effective solution that fits your test requirements and can be easily extended with additional tests locally as required.



AVAILABLE TESTS

IMU Series



ESD Electrostatic Discharges

up to 16kV

According to IEC/EN 61000-4-2



Electric Fast Transient / Burst (EFT)

up to 7kV

According to IEC/EN 61000-4-4



Combination Wave / Surge (CWG)

up to 8kV

According to IEC/EN 61000-4-5, ANSI C62.41



Telecom Impulse (10/700)

up to 8kV

According to IEC/EN 61000-4-5, ITU-T K.44



Ring Wave 100kHz (Ring)

up to 8kV

According to IEC/EN 61000-4-12, ANSI C62.41



Common Mode (CM)

up to 35V continuous / 330V short

According to IEC/EN 61000-4-16



Differential Mode (DM)

4.4A / 25V

According to IEC/EN 61000-4-19



AC & DC Dips, Variations and Interruptions

up to 75 A

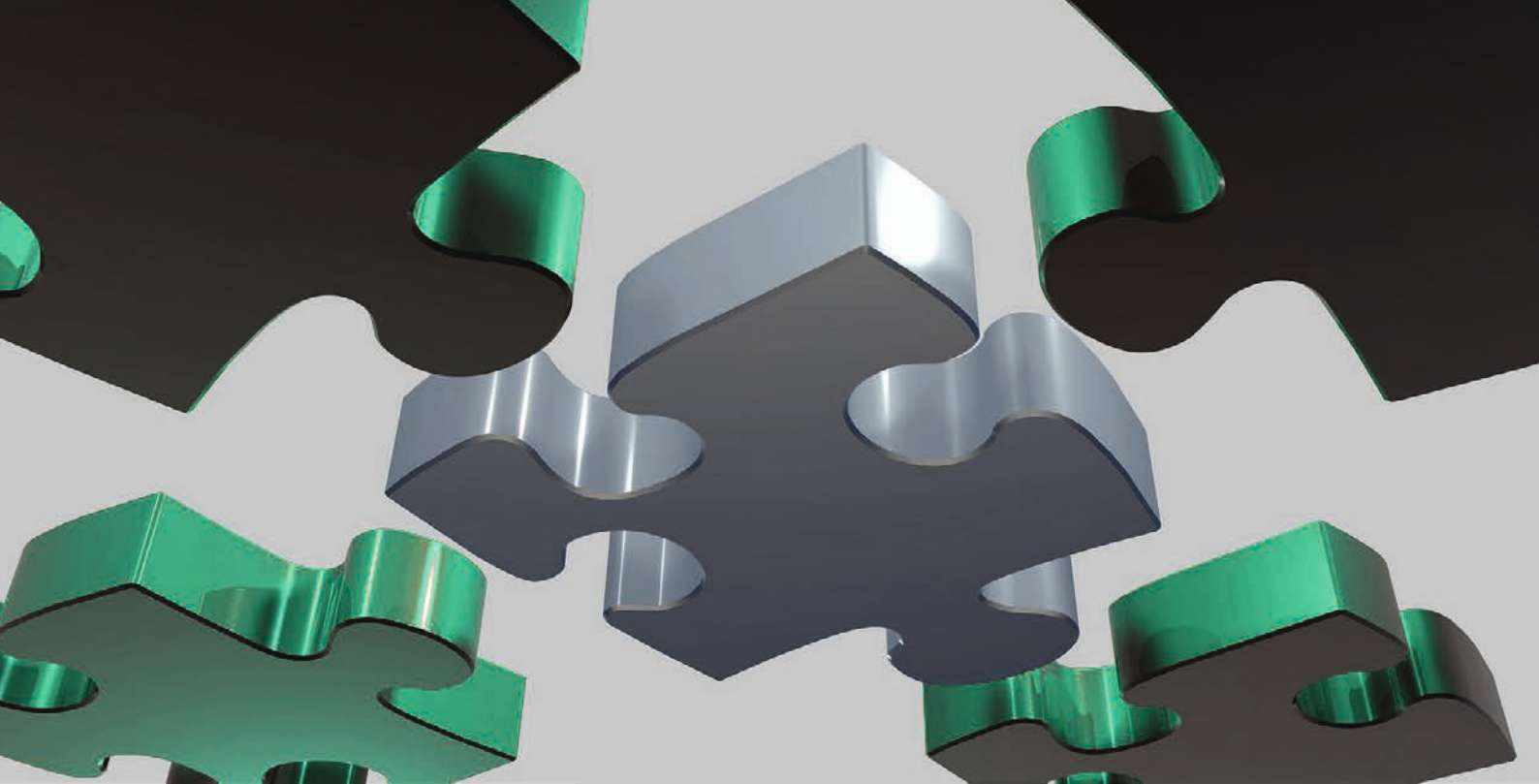
According to IEC/EN 61000-4-11 /-29 /-34



Magnetic Field / Pulse

up to 1000 A/m

According to IEC/EN 61000-4-8 / -9



UNIQUE FEATURES

Leading technology - New design takes advantage of latest innovations.

Test routines



Link together many different test types into one sequence.

Test reporting



Generate test reports via USB interface or built in webserver as csv, html and pdf formats.

Online updates free of charge

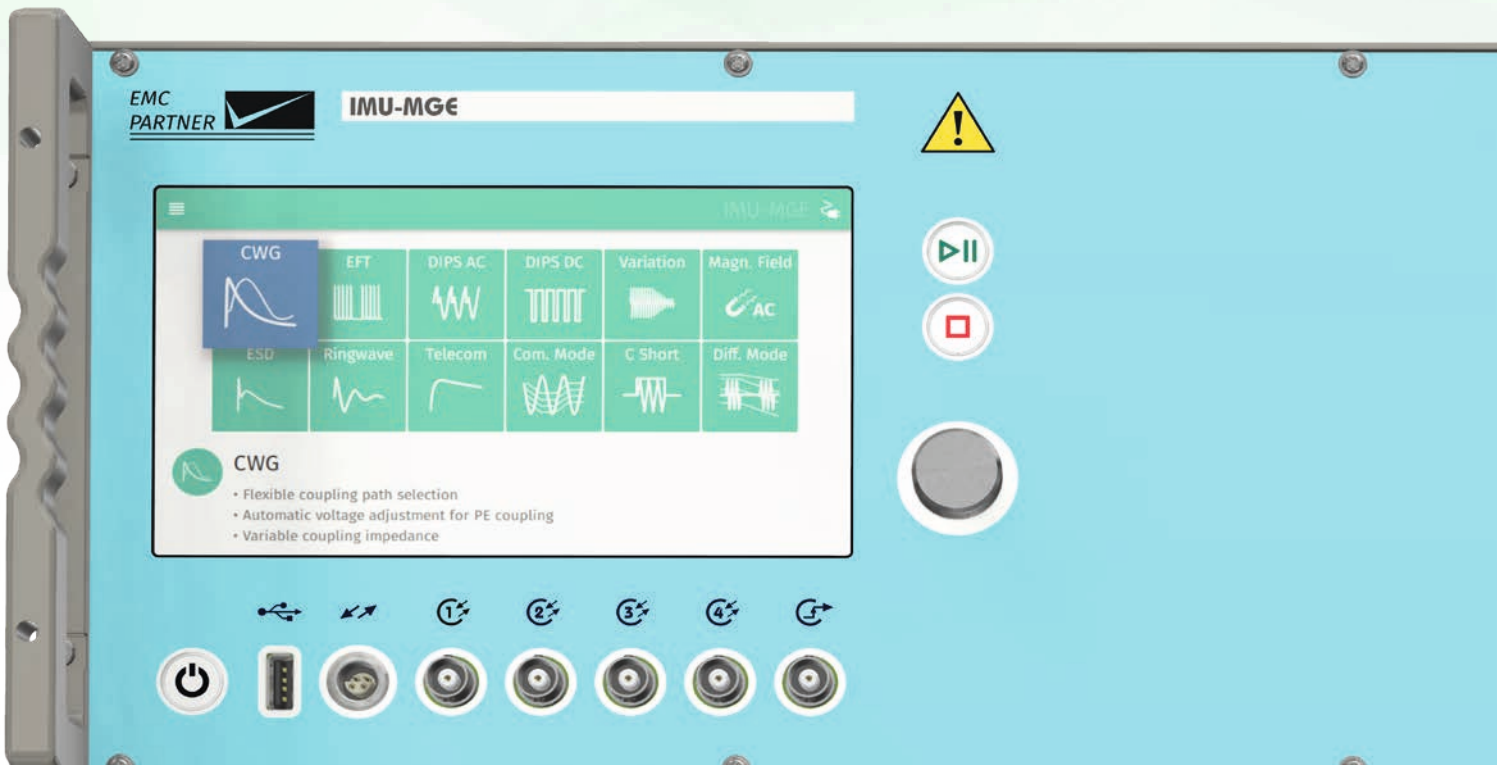


Software download from internet directly into the instrument.

Extend testing capability



Hardware upgrades performed onsite, reducing downtime to practically zero.



EPOS – BEYOND BETTER

EMC PARTNER Operating System (EPOS) has been driving IMU generators since 2012, the latest generation is a complete revision and enhancement bringing more features and user benefits. The user friendly full colour graphic interface with built-in help and on-screen set-up diagrams make operating instructions obsolete and accelerate the customer learning experience. The included web server enables test files and reports to be quickly and easily transferred between IMU generators or computers, without the need for specialist software.

Test setup libraries



Pre-programmed tests for all basic and generic standards included.

Simple touch screen navigation



Save time with the latest in intuitive menu structures.

Power management

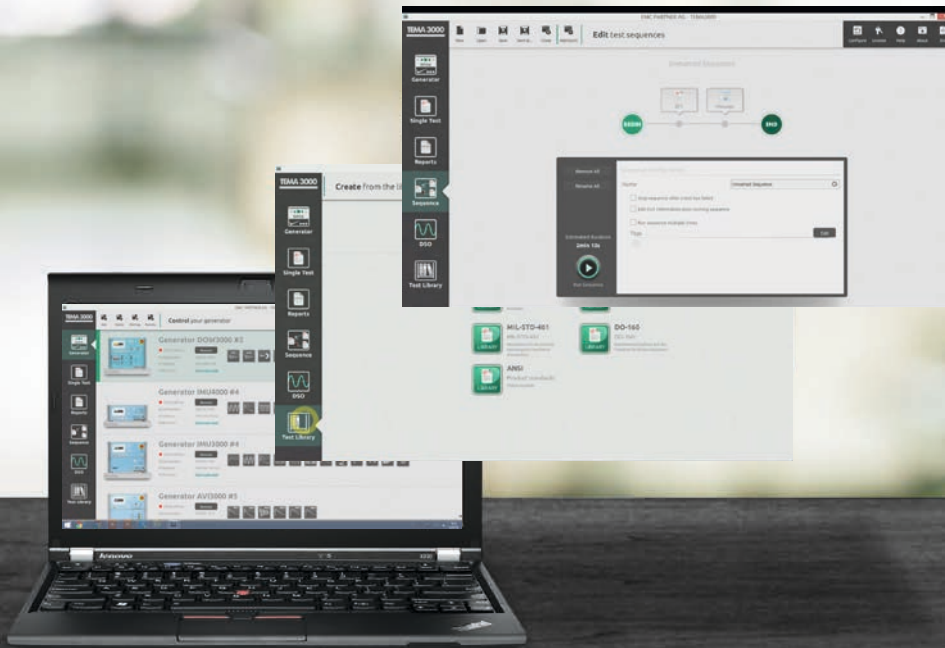


Active monitor and control of EUT power. EUT current limit to prevent damage.

We speak your language



Select between English, German, French, Italian, Spanish, Russian, Chinese (traditional and simplified).

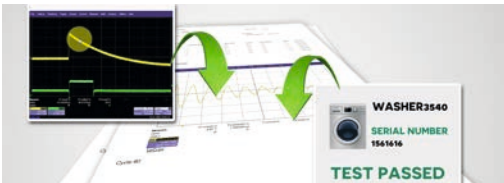


TEMA3000 SOFTWARE SUITE

The best solution for professional EMC Test Labs enables comfortable test setups, easy parameter changes, customizable test reports and DSO integration.

Want to know more? Further information and demo version available on the website

Customizable test reports



- › Customize & edit your protocols
- › Export to multiple file formats
- › Integrate DSO measurements

Manage tests and sequences



- › Predefined test setups
- › Save and load own tests and sequences

Productive workflow



- › Minimum learning time
- › Integrated assistant function

Smart connectivity



- › Transfer tests / reports to PC
- › Integrated web server
- › Remote control from computer

Technical Specifications

GENERATORS

IMU-MGS

IMU-MGS Mainframe

EUT power input 1 (CDN)	max. AC/DC 300V, 16A (fused 16A) c
EUT power input 2 (CDN)	max. AC/DC 300V, 16A (not fused) with P module
Internal CDN freq. range	DC, 50 Hz, 60 Hz
Power freq. synchr.	50/60 Hz
Coupling Burst	L, N, PE, L+N, L+PE, N+PE, L+N+PE, direct out
Coupling Surge	2 Ω: L-N, direct out, 12 Ω: L-PE, N-PE



IMU-MGS Control features

Operating system	EPOS proprietary firmware
Languages	8 menu languages, selectable
User interface	7" colour touch display
Connectivity	ethernet, USB, RS485
Environment meas.	built-in temperature and humidity sensor
EUT power monitor	supply voltage, current and freq. on screen
Programmable BNC	6 connectors, bidirectional
EUT voltage monitor BNC	10 V = 400 Vac, max. 15 V
EUT current monitor BNC	10 V = 50 Aac, max. 15 V
Surge voltage monitor BNC	10 V = 5 kV, max. 15 V
Surge current monitor BNC	10 V = 3 kA, max. 15 V
Trigger out	BNC
Trigger in	auto, manual
Synchro. source	EUT Power, direct out, external
Power synchro. on/off	0 – 359°, 1° step
Input power selection	PWR1 or PWR2
EUT overcurrent protection	automatic programmable fuse up to 16 A
Emergency stop	BNC input and on front panel
Warning lamp	Connector on rear panel
PS3 Control	DC, 16.7Hz, 50Hz, 60Hz supply power

IMU-MGS module: EXT-IMU P

Application	Enhance DC capability from 90 V to 300 V required when the D module is not included
EUT power	0 V - 300 V max. 16 A
EUT frequency	DC - 60 Hz

IMU-MGS module: EXT-IMU E, ESD extension 16 kV

See section Accessories for IMU Series: IEC 61000-4-2

IMU-MGS module: EXT-IMU4000 F4, EFT / Burst extension 4.4 kV

Standard	IEC 61000-4-4 latest edition
Output impedance	50 Ω
Voltage OC	0.2 kV – 4.4 kV
Voltage into 50 Ω	0.1 kV – 2.2 kV \pm 10 %
Waveform into 50 Ω	5 \pm 1.5 ns / 50 \pm 15 ns
Voltage into 1 k Ω	0.191 kV - 4.18 kV \pm 20%
Waveform into 1 k Ω	5 \pm 1.5 ns / 50 ns (-15/+100 ns)
Spike frequency	1 kHz - 1 MHz
Maximum spikes / second	8000 @ 1 kV
Burst duration	0.01 ms - 30 ms, continuous up to 8 kHz
Burst repetition	1 - 1000 ms
Polarity	positive, negative, alternating
Synchronization	0 – 359°, step 1°
Ramps	voltage, spike frequency, burst duration
Optional accessories	CDNs , Accessories

IMU-MGS module: EXT-IMU4000 F5, EFT / Burst extension 5.1 kV

Standard	IEC 61000-4-4 latest edition
Output impedance	50 Ω
Voltage OC	0.2 kV – 5.1 kV
Voltage into 50 Ω	0.1 kV – 2.55 kV \pm 10 %
Waveform into 50 Ω	5 \pm 1.5 ns / 50 \pm 15 ns
Voltage into 1 k Ω	0.191 kV – 4.85 kV \pm 20 %
Waveform into 1 k Ω	5 \pm 1.5 ns / 50 ns (-15/+100 ns)
Spike frequency	1 kHz - 1 MHz
Maximum spikes / second	8000 @ 1 kV
Burst duration	0.01 ms - 30 ms, continuous up to 8 kHz
Burst repetition	1 - 1000 ms
Polarity	positive, negative, alternating
Synchronization	0 – 359°, step 1°
Ramps	voltage, spike frequency, burst duration
Optional accessories	CDNs , Accessories

IMU-MGS module: EXT-IMU4000 S4, CWG / Surge extension 4.1 kV

Standard	IEC 61000-4-5 latest edition
Output impedance	2 Ω
Voltage OC	0.25 kV - 4.1 kV \pm 10 %
Voltage waveform	1.2 μ s \pm 30 % / 50 μ s \pm 20 %
Current SC	0.125 kA - 2.05 kA \pm 10 %
Current waveform	8 μ s \pm 20 % / 20 μ s \pm 20 %
Pulse repetition	up to 1 / s @ 0.8 kV, 1 / 5 s @ 4.1 kV
Polarity	positive, negative, alternating
Synchronization	0 – 359°, step 1°
Ramps	voltage, synchronisation angle
Magnetic pulse test	IEC 61000-4-9, see MF1000-x antennas
Optional accessories	CDNs , CDNs for I/O Lines , Accessories

IMU-MGS module: EXT-IMU4000 S5, CWG / Surge extension 5.1 kV

Standard	IEC 61000-4-5 latest edition
Output impedance	2 Ω
Voltage OC	0.25 kV - 5.1 kV \pm 10 %
Voltage waveform	1.2 μ s \pm 30 % / 50 μ s \pm 20 %
Current SC	0.125 kA - 2.55 kA \pm 10 %
Current waveform	8 μ s \pm 20 % / 20 μ s \pm 20 %
Pulse repetition	up to 1 / s @ 0.8 kV, 1 / 5.5 s @ 5.1 kV
Polarity	positive, negative, alternating
Synchronization	0 – 359°, step 1°
Ramps	voltage, synchronisation angle
Magnetic pulse test	IEC 61000-4-9, see MF1000-x antennas
Optional accessories	CDNs, CDNs for I/O Lines, Accessories

IMU-MGS module: EXT-IMU D, AC/DC dips, interruptions extension

Standard	IEC 61000-4-11 latest edition
EUT AC power	0 V – 300 V, max. 16 A
EUT frequency with variac	48 Hz – 60 Hz
Switch time into 100 Ω	1 μ s – 5 μ s
Interruption time	50 μ s – 60 s
Inrush current	> 500 A peak
Dips internal variac	voltage 0 – 110 %, max. 5 A
Dips extern. variac	voltage 0 – 110 %, max. 16 A
EUT turn ON/OFF phase	selectable, 0° – 359°
Variation mode	adjust, abrupt
Variation internal variac	voltage 0 – 100 %, max. 5A
Variation external variac	voltage 0 – 100 %, max 16A
Interruption < one period	input as phase angle
Interruption > one period	input in ms
Ramps	voltage, synchronisation angle, time
Requires	EXT-IMU V, SRC16-1P or VAR-EXT1000 for AC dips
Optional accessories	Accessories

Standard	IEC 61000-4-29 latest edition
EUT DC power	24 – 300 V, 0 – 16 A @ 300V
Switch time into 100 Ω	1 μ s – 50 μ s
Interruption time	0.1 ms – 60000 ms
Requires	1 x PS3 for DC interrupt., 2 x PS3 for DC dips

IMU-MGS module: EXT-IMU V, dips and variations extension

Standard	IEC 61000-4-11 latest edition
Construction	internal variac
Power input AC	20 – 250 V, 5 A, 50/60 Hz
Power output dips	max. 275 V (110 %), max. 5 A continuous
Power output variations	max. 250 V (100 %), max. 5 A continuous

Current capability dips	10 A for 5 sec., 16 A for 300 ms
Variation mode	adjust, abrupt
Voltage slew rate	< 1.2 s from 0 to 100 %
Switching time abrupt	1 – 5 μ s
Ramp transition time	25 – 999 periods @ 50/60 Hz
Magnetic field test	IEC 61000-4-8, see MF1000-x antennas

IMU-MGS module: EXT-IMU C, Common mode extension

Standard	IEC 61000-4-16 latest edition
Test voltage continuous	0.1 – 35 Vrms
Power harmonic test	15 Hz – 150 kHz up to 35 V
Sweep time	adjustable, decade time: 10 s – 1000 s
Test voltage short duration	0.1 – 330 Vrms: requires PS3, EXT-IMU C-SHORT
Power frequency test	DC, 16.7 Hz, 50 Hz, 60 Hz
Source impedance	50 Ω \pm 10 %
Sync. turn on/off for AC	0° \pm 5°
DC switching time	1 – 5 μ s
Residual ripple DC	< 5%
THD 15 Hz – 150 kHz	< 1%
THD power frequency	< 10%
Optional accessories	CNs for I/O Lines, Accessories

IMU-MGS module: IMU SLAVE SMART external module

See section [Accessories](#) for IMU Series: IEC 61000-4-19

POWER, WEIGHT, DIMENSIONS, CLIMATIC CONDITIONS

IMU-MGS mainframe

Operating voltage	100 – 240 V (50/60 Hz) \pm 10 %
Power consumption	ON < 150 VA, standby < 15 VA
Weight	16 kg (weight of modules not included)
W x d x h	520 x 433 x 180 mm
Version	19" unit, 4 UH
Temperature range	10 – 35 °C
Humidity	< 80 % non-condensing
Air pressure	86 – 106 kPa
Included articles	
Power cord	with country plug
Supply connection	3 cables x 2 m, banana plugs
User manual	digital format (PDF)
Calibration certificate	factory calibration
Ethernet cable	1 piece
USB stick	1 piece

IMU-MGE

IMU-MGE Mainframe

EUT power input 1 (CDN)	max. AC/DC 300V, 16A (fused 16A) with P module
EUT power input 2 (CDN)	max. AC/DC 300V, 16A (not fused) with P module
Internal CDN freq. range	DC, 50 Hz, 60 Hz
Power freq. synchr.	50/60 Hz
Coupling Burst	L, N, PE, L+N, L+PE, N+PE, L+N+PE, direct out
Coupling Surge	2 Ω: L-N, direct out, 12 Ω: L-PE, N-PE, direct out
Coupling Ring wave	12 Ω and 30 Ω: L-N, N-PE, L-PE, direct out



IMU-MGE Control features

Operating system	EPOS proprietary firmware
Languages	10 menu languages, selectable
User interface	7" colour touch display
Connectivity	ethernet, USB, RS485
Environment meas.	built-in temperature and humidity sensor
EUT power monitor	supply voltage, current and freq. on screen
Programmable BNC	6 connectors, bidirectional
EUT voltage monitor BNC	10 V = 400 Vac, max. 15 V
EUT current monitor BNC	10 V = 50 Aac, max. 15 V
Surge voltage monitor BNC	10 V = 8 kV, max. 15 V
Surge current monitor BNC	10 V = 4 kA, max. 15 V
Trigger out	BNC, max. 15 V
Trigger in	auto, manual, external (BNC input)
Synchro. source	EUT Power, direct out, external
Power synchro. on/off	0 – 359°, 1° step
Input power selection	PWR1 or PWR2 buttons on front panel
EUT overcurrent protection	automatic programmable fuse up to 16 A
Emergency stop	Emergency button on front panel, BNC input
PS3 Control	DC, 16.7Hz, 50Hz, 60Hz
Warning lamp	Connector on rear panel

IMU-MGS module: EXT-IMU P

Application	Enhance DC capability from 90 V to 300 V required when the D module is not included
EUT power	0 V - 300 V max. 16 A
EUT frequency	DC - 60 Hz

IMU-MGE module: EXT-IMU E, ESD extension 16 kV

See section Accessories for IMU Series: [IEC 61000-4-2](#)

IMU-MGE module: EXT-IMU3000 F5, EFT / Burst extension 5.3 kV

Standard	IEC 61000-4-4 latest edition
Output impedance	50 Ω
Voltage OC	0.2 kV – 5.3 kV \pm 10 %
Voltage into 50 Ω	0.1 kV – 2.65 kV \pm 10 %
Waveform into 50 Ω	5 \pm 1.5 ns / 50 \pm 15 ns
Voltage into 1 kΩ	0.191 kV – 5.04 kV \pm 20 %
Waveform into 1 kΩ	5 \pm 1.5 ns / 50 ns (-15/+100 ns)
Spike frequency	1 kHz - 1 MHz
Maximum spikes / second	8000 @ 1 kV
Burst duration	0.01 ms - 30 ms, continuous up to 8 kHz
Burst repetition	1 - 1000 ms
Polarity	positive, negative, alternating
Synchronization	0 – 359°, step 1°
Ramps	voltage, spike frequency, burst duration
Optional accessories	CDNs, Accessories

IMU-MGE module: EXT-IMU3000 F6, EFT / Burst extension 6.3 kV

Standard	IEC 61000-4-4 latest edition
Output impedance	50 Ω
Voltage OC	0.2 kV – 6.3 kV \pm 10 %
Voltage into 50 Ω	0.1 kV – 3.15 kV \pm 10 %
Waveform into 50 Ω	5 \pm 1.5 ns / 50 \pm 15 ns
Voltage into 1 kΩ	0.191 kV – 5.99 kV \pm 20 %
Waveform into 1 kΩ	5 \pm 1.5 ns / 50 ns (-15/+100 ns)
Spike frequency	1 kHz - 1 MHz
Maximum spikes / second	8000 @ 1 kV
Burst duration	0.01 ms - 30 ms, continuous up to 8 kHz
Burst repetition	1 - 1000 ms
Polarity	positive, negative, alternating
Synchronization	0 – 359°, step 1°
Ramps	voltage, spike frequency, burst duration
Optional accessories	CDNs, Accessories

IMU-MGE module: EXT-IMU3000 F7, EFT / Burst extension 7.1 kV

Standard	IEC 61000-4-4 latest edition
Output impedance	50 Ω
Voltage OC	0.2 kV – 7.1 kV \pm 10 %
Voltage into 50 Ω	0.1 kV – 3.5 kV \pm 10 %
Waveform into 50 Ω	5 \pm 1.5 ns / 50 \pm 15 ns
Voltage into 1 kΩ	0.191 kV – 6.75 kV \pm 20 %
Waveform into 1 kΩ	5 \pm 1.5 ns / 50 ns (-15/+100 ns)
Spike frequency	1 kHz - 1 MHz
Maximum spikes / second	8000 @ 1 kV
Burst duration	0.01 ms - 30 ms, continuous up to 8 kHz
Burst repetition	1 - 1000 ms
Polarity	positive, negative, alternating
Synchronization	0 – 359°, step 1°
Ramps	voltage, spike frequency, burst duration
Optional accessories	CDNs , Accessories

IMU-MGE module: EXT-IMU3000 S6, CWG / Surge extension 6.6 kV

Standard	IEC 61000-4-5 latest edition
Output impedance	2 Ω
Voltage OC	0.25 kV - 6.6 kV \pm 10 %
Voltage waveform	1.2 μ s \pm 30 % / 50 μ s \pm 20 %
Current SC	0.125 kA – 3.3 kA \pm 10 %
Current waveform	8 μ s \pm 20 % / 20 μ s \pm 20 %
Pulse repetition	up to 1 / s @ 0.6 kV, 1 / 10 s @ 6.6 kV
Polarity	positive, negative, alternating
Synchronization	0 – 359°, step 1°
Ramps	voltage, synchronisation angle
Magnetic pulse test	IEC 61000-4-9, see MF1000-x antennas
Optional accessories	CDNs , CDNs for I/O Lines , Accessories

IMU-MGE module: EXT-IMU3000 S8, CWG / Surge extension 8 kV

Standard	IEC 61000-4-5 latest edition
Output impedance	2 Ω
Voltage OC	0.25 kV – 8 kV \pm 10 %
Voltage waveform	1.2 μ s \pm 30 % / 50 μ s \pm 20 %
Current SC	0.125 kA – 4 kA \pm 10 %
Current waveform	8 μ s \pm 20 % / 20 μ s \pm 20 %
Pulse repetition	up to 1 / s @ 0.6 kV, 1 / 12 s @ 8 kV
Polarity	positive, negative, alternating
Synchronization	0 – 359°, step 1°
Ramps	voltage, synchronisation angle
Magnetic pulse test	IEC 61000-4-9, see MF1000-x antennas
Optional accessories	CDNs , CDNs for I/O Lines , Accessories

IMU-MGE module: EXT-IMU3000 T6, Telecom Surge extension 6.6 kV

Standard	IEC 61000-4-5 latest edition
Output impedance	15 Ω , 40 Ω
Voltage OC	0.25 kV - 6.6 kV \pm 10 %
Voltage waveform	10 μ s \pm 30 % / 700 μ s \pm 20 %
Current SC into 40 Ω	6.25 A - 165 A \pm 10 %
Current waveform	5 μ s \pm 20 % / 320 μ s \pm 20 %
Pulse repetition	up to 1 / s @ 0.3 kV, 1 / 20 s @ 6.6 kV
Polarity	positive, negative, alternating
Ramps	voltage
Optional accessories	CDNs for I/O Lines, Accessories

IMU-MGE module: EXT-IMU3000 T8, Telecom Surge extension 8 kV

Standard	IEC 61000-4-5 latest edition
Output impedance	15 Ω , 40 Ω
Voltage OC	0.25 kV - 8 kV \pm 10 %
Voltage waveform	10 μ s \pm 30 % / 700 μ s \pm 20 %
Current SC into 40 Ω	6.25 A - 200 A \pm 10 %
Current waveform	5 μ s \pm 20 % / 320 μ s \pm 20 %
Pulse repetition	up to 1 / s @ 0.3 kV, 1 / 24 s @ 8 kV
Polarity	positive, negative, alternating
Ramps	voltage
Optional accessories	CDNs for I/O Lines, Accessories

IMU-MGE module: EXT-IMU D, AC/DC Dips, Interruptions extension

Standard	IEC 61000-4-11 latest edition
EUT AC power	0 V - 300V @ 50 / 60 Hz, max. 16 A
EUT frequency with variac	48 Hz - 60 Hz
Switch time into 100 Ω	1 μ s - 5 μ s
Interruption time	50 μ s - 30 s
Inrush current	> 500 A peak
Dips internal variac	voltage 0 - 110 %, max. 5 A
Dips extern. variac	voltage 0 - 110 %, max. 16 A
EUT turn ON/OFF phase	selectable, 0° - 359°
Variation mode	adjust, abrupt
Variation internal variac	voltage 0 - 100 %, max. 5A
Variation external variac	voltage 0 - 100 %, max 16A
Interruption < one period	input as phase angle
Interruption > one period	input in ms
Ramps	voltage, synchronisation angle, time
Requires	EXT-IMU V , SRC16-1P or VAR-EXT1000 for AC dips
Optional accessories	Accessories

Standard	IEC 61000-4-29 latest edition
EUT DC power	24 - 300 V, 0 - 16 A @ 300V

Switch time into 100 Ω	1 μs – 50 μs
Interruption time	0.1 ms – 60000 ms
Requires	1 x PS3 for DC interrupt., 2 x PS3 for DC dips

IMU-MGE module: EXT-IMU V, Variations extension

Standard	IEC 61000-4-11 latest edition
Construction	internal variac
Power input AC	20 – 250 V, 5 A, 50/60 Hz
Power output dips	max. 275 V (110 %), max. 5 A continuous
Power output variations	max. 250 V (100 %), max. 5 A continuous
Current capability dips	10 A for 5 sec., 16 A for 300 ms
Variation mode	adjust, abrupt
Voltage slew rate	< 1.2 s from 0 to 100 %
Switching time abrupt	1 – 5 μs
Ramp transition time	25 – 999 periods
Magnetic field test	IEC 61000-4-8, see MF1000-x antennas

IMU-MGE module: EXT-IMU3000 R6, 100 kHz Ring wave extension 6.6 kV

Standard	IEC 61000-4-12 latest edition
Output impedance	12 Ω, 30 Ω
Voltage OC	0.25 kV - 6.6 kV ± 10 %, decay as in IEC, ANSI
Voltage rise time/ osc. freq.	0.5 μs ± 30 % / 100 kHz ± 10 %
Current SC into 12 Ω	20.833 A – 550 A ± 10 %
Current SC into 30 Ω	8.3 A – 220 A ± 10 %
Current rise time	0.2 - 1 μs
Pulse repetition	up to 1 / s @ 1 kV, 1 / s @ 6.6 kV
Polarity	positive, negative, alternating
Synchronization	0 – 359°, step 1°
Ramps	voltage, synchronisation angle
Optional accessories	CDNs , CDNs for I/O Lines , Accessories

IMU-MGE module: EXT-IMU3000 R8, 100 kHz Ring wave extension 8 kV

Standard	IEC 61000-4-12 latest edition
Output impedance	12 Ω, 30 Ω
Voltage OC	0.25 kV - 8 kV ± 10 %, decay as in IEC, ANSI
Voltage rise time/ osc. freq.	0.5 μs ± 30 % / 100 kHz ± 10 %
Current SC into 12 Ω	20.83 A – 667 A ± 10 %
Current SC into 30 Ω	8.3 A – 267 A ± 10 %
Current rise time	0.2 - 1 μs
Pulse repetition	up to 1 / s @ 1 kV, 1 / s @ 8 kV
Polarity	positive, negative, alternating
Synchronization	0 – 359°, step 1°
Ramps	voltage, synchronisation angle
Optional accessories	CDNs , CDNs for I/O Lines , Accessories

IMU-MGE module: EXT-IMU C, Common mode extension

Standard	IEC 61000-4-16 latest edition
Test voltage continuous	0.1 – 35 Vrms
Power harmonic test	15 Hz – 150 kHz
Sweep time	adjustable, decade time: 10 s – 1000 s
Test voltage short duration	0.1 – 330 Vrms: PS3, EXT-IMU C-SHORT
Power frequency test	DC, 16.7 Hz, 50 Hz, 60 Hz
Source impedance	50 Ω \pm 10 %
Sync. turn on/off for AC	0° \pm 5°
DC switching time	1 - 5 μ s
Residual ripple DC	< 5%
THD 15 Hz – 150 kHz	< 1%
THD power frequency	< 10%
Optional accessories	CNs, CNs for I/O Lines, Accessories

IMU-MGE module: IMU SLAVE SMART external module

See section Accessories for IMU Series: [IEC 61000-4-19](#)

POWER, WEIGHT, DIMENSIONS, CLIMATIC CONDITIONS

IMU-MGE mainframe

Operating voltage	100 – 240 V (50/60 Hz) \pm 10 %
Power consumption	ON < 150 VA, standby < 15 VA
Weight	30 kg (weight of modules not included)
W x d x h	600 x 450 x 370 mm
Version	19" unit, 8 UH
Temperature range	10 – 35 °C
Humidity	< 80 % non-condensing
Air pressure	86 – 106 kPa
Included articles	
Power cord	with country plug
Supply connection	3 cables x 2 m, banana plugs
User manual	digital format (PDF)
Calibration certificate	factory calibration
Ethernet cable	1 piece
USB stick	1 piece

For further information please do not hesitate to contact your local EMC PARTNER AG representative.
Visit our website for more information and contact details.

www.emc-partner.com

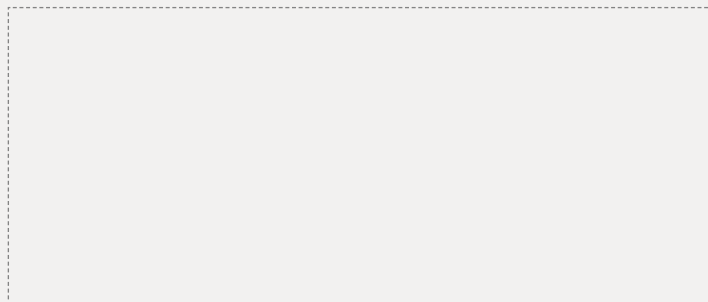


Swiss Headquarters

EMC PARTNER AG
Baselstrasse 160
CH - 4242 Laufen

Phone +41 61 775 20 30
Fax +41 61 775 20 59
Email sales@emc-partner.ch
Web www.emc-partner.com

Your local representative



Information and specifications in this document are an indication of capability only. Version 1.0 .Subject to change without notice. EMC PARTNER AG publishes only the English version of this document. Translation into other languages is not guaranteed to be a true representation of content or specification.

© by EMC PARTNER AG. No changes or reproduction without permission of EMC PARTNER AG allowed.